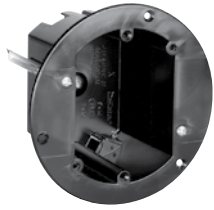
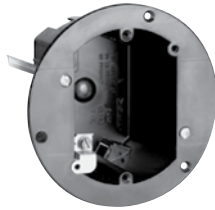


# SLATER® PLASTIC BOXES

## Round Ceiling Boxes


**C118WAC**

**C118WGAC**

**C118RAC**

**C118RGAC**

**C118HGAC**

**C118HAC**

CATALOG NUMBER	CU. IN. VOL.	DESCRIPTION	DIMENSIONS (IN.)		WIRES (AWG)	QTY. PER CARTON	UL LISTED
			DIA.	DEPTH			MAX. WEIGHT RATING
3 3/4" ROUND OLD WORK CEILING BOXES							
<b>C118WAC</b>	18.0	3 3/4" round. Swing brackets for mounting adjust from 1 1/4" down to 1/8". 4 Auto/Clamps®. Includes device mounting holes.	3 3/4"	2 11/16"	9 No. 14 8 No. 12 7 No. 10	50	20 lbs.
<b>C118WGAC</b>	18.0	3 3/4" round. With grounding lug. Swing brackets for mounting adjust from 1 1/4" down to 1/8". 4 Auto/Clamps®. Includes device mounting holes.	3 3/4"	2 11/16"	9 No. 14 8 No. 12 7 No. 10	50	20 lbs.
3 3/4" ROUND OLD WORK CEILING BOXES							
<b>C118WACX</b>	18.0	3 3/4" round. Same as C118WAC, except without swing brackets, for screw mounting into OSB or plywood. 4 Auto/Clamps®.	3 3/4"	2 11/16"	9 No. 14 8 No. 12 7 No. 10	50	8 lbs.
<b>C118WGACX</b>	18.0	3 3/4" round. Same as C118WGAC, except without swing brackets, for screw mounting into OSB or plywood. 4 Auto/Clamps®.	3 3/4"	2 11/16"	9 No. 14 8 No. 12 7 No. 10	50	8 lbs.
3 1/4" ROUND CEILING BOXES*							
<b>C118RAC</b>	18.0	3 1/4" round. 2 captive mounting nails. 4 Auto/Clamps®.	3 1/4"	3 5/32"	9 No. 14 8 No. 12 7 No. 10	50	50 lbs.
<b>C118RGAC</b>	18.0	3 1/4" round with ground lug. 2 captive mounting nails. 4 Auto/Clamps®.	3 1/4"	3 5/32"	9 No. 14 8 No. 12 7 No. 10	50	50 lbs.
<b>C118HAC</b>	18.0	3 1/4" round. Bar-hanger adjusts to 16" or 24" joist spacing. 4 Auto/Clamps®.	3 1/4"	3 5/32"	9 No. 14 8 No. 12 7 No. 10	50	50 lbs.
<b>C118HGAC</b>	18.0	3 1/4" round with ground lug. Bar-hanger adjusts to 16" or 24" joist spacing. 4 Auto/Clamps®.	3 1/4"	3 5/32"	9 No. 14 8 No. 12 7 No. 10	50	50 lbs.

\*UL Classified for 2 Hour Fire Resistance.